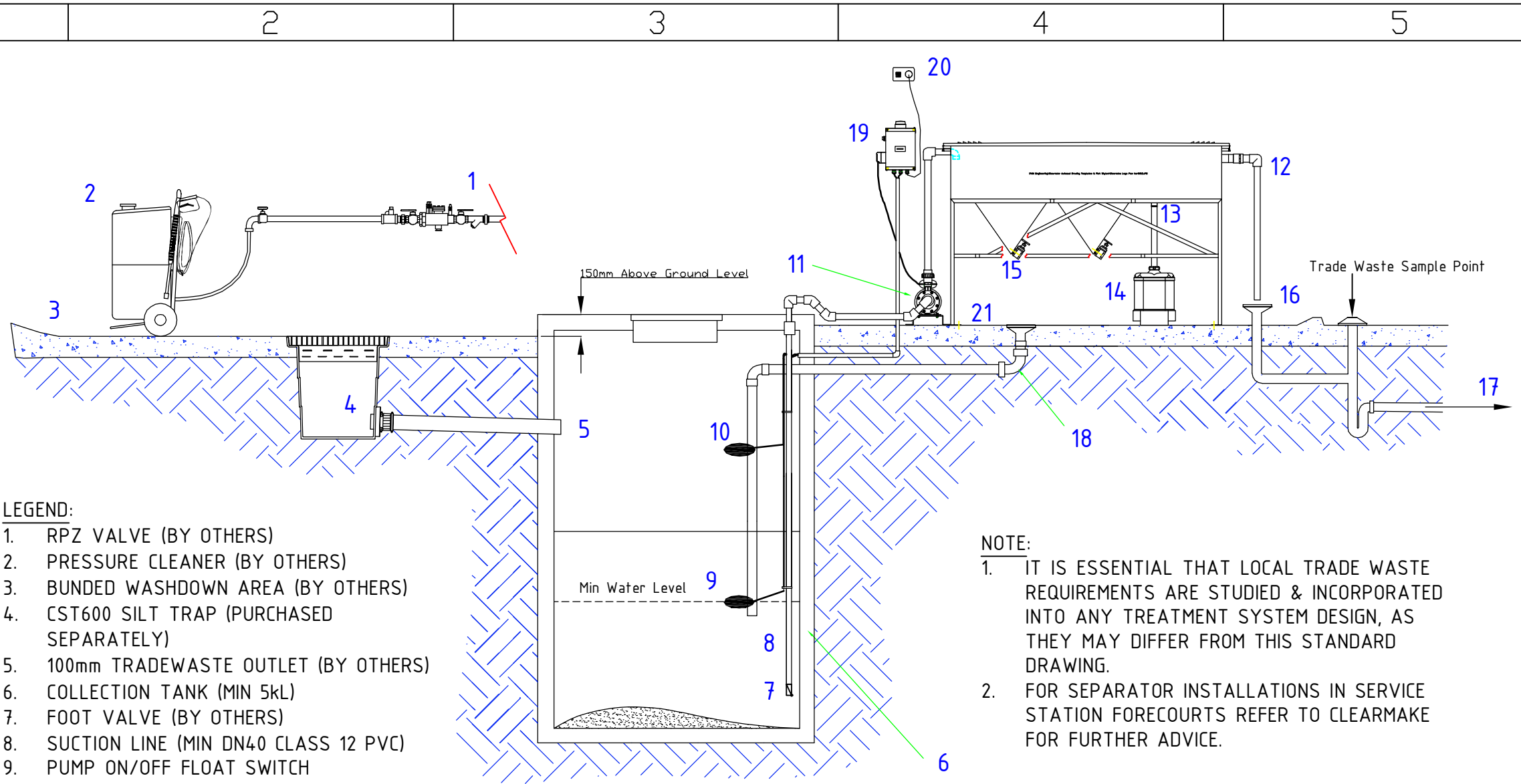


© COPYRIGHT - CLEARMAKE 2013  
 COMMERCIAL IN CONFIDENCE  
 100mm 1:1 (A4 SHEET)



**LEGEND:**

1. RPZ VALVE (BY OTHERS)
2. PRESSURE CLEANER (BY OTHERS)
3. BUNDED WASHDOWN AREA (BY OTHERS)
4. CST600 SILT TRAP (PURCHASED SEPARATELY)
5. 100mm TRADEWASTE OUTLET (BY OTHERS)
6. COLLECTION TANK (MIN 5kL)
7. FOOT VALVE (BY OTHERS)
8. SUCTION LINE (MIN DN40 CLASS 12 PVC)
9. PUMP ON/OFF FLOAT SWITCH
10. HIGH LEVEL ALARM FLOAT SWITCH (OPTIONAL PURCHASE)
11. SEPARATOR PUMP
12. CLEARMAKE OIL/WATER SEPARATOR
13. OIL SKIMMER DISCHARGE TO WASTE OIL RESERVOIR
14. WASTE OIL RESERVOIR
15. SLUDGE DRAIN VALVE
16. TUNDISH/DRAIN (IF REQUIRED)
17. DISCHARGE TO SEWER (IN ACCORDANCE WITH AS3500 PART 2)

**NOTE:**

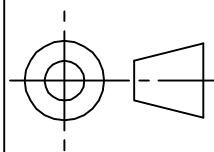
1. IT IS ESSENTIAL THAT LOCAL TRADE WASTE REQUIREMENTS ARE STUDIED & INCORPORATED INTO ANY TREATMENT SYSTEM DESIGN, AS THEY MAY DIFFER FROM THIS STANDARD DRAWING.
2. FOR SEPARATOR INSTALLATIONS IN SERVICE STATION FORECOURTS REFER TO CLEARMAKE FOR FURTHER ADVICE.

18. BUND DRAIN BACK TO COLLECTION TANK
19. CLEARMAKE LOW VOLTAGE CONTROLLER
20. 240V 50Hz MAINS WALL OUTLET (BY OTHERS)
21. BUNDED SEPARATOR AREA (BY OTHERS)

General Tolerances  
 ISO 2768-m  
 u.n.o.

Not to Scale

Dimensions in millimetres



PROJECT **STANDARD PRODUCTS**

NAME **TYPICAL ROOFED WASHDOWN TREATMENT SYSTEM**



MAKWATER PTY LTD 21 PROJECT AVE NOOSAVILLE QLD 4556 AUSTRALIA  
 PH: 61 7 5455 6822 FAX: 61 7 5455 6833 EMAIL: info@clearmake.com.au WEB: www.clearmake.com.au

DRAWING NO. **7080P002-301**

REVISION	DRAWN	CHECKED	DATE
0	JM	PM	14.05.15
1	RG	JKS	24.10.17