

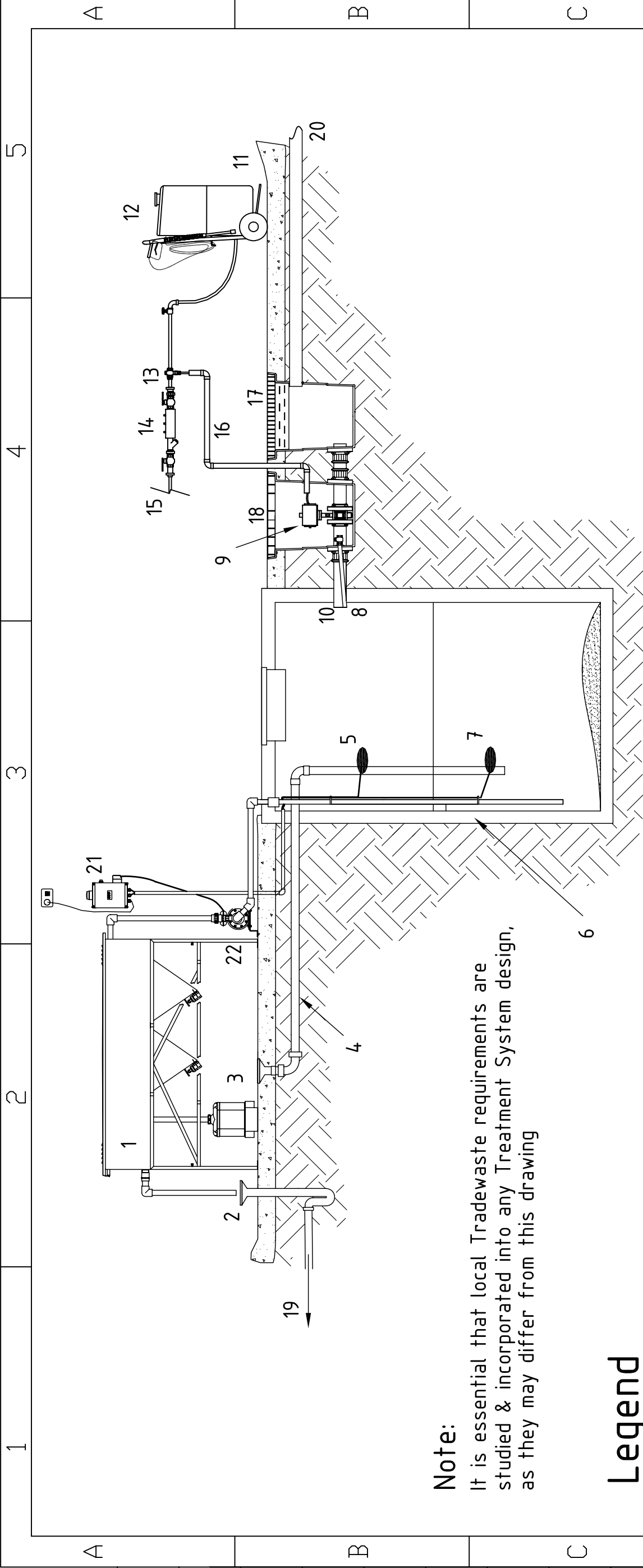
Note:

It is essential that local Tradewaste requirements are studied & incorporated into any Treatment System design, as they may differ from this drawing

Legend

- 1. Clearmake Oil/Water Separator
- 2. Trapped Tundish/Drain if required
- 3. Waste Oil Reservoir
- 4. Drain back to Holding Tank
- 5. High level Alarm Float Switch
- 6. Holding Tank
- 7. Pump on/off Float Switch
- 8. Dry Pit Drain (by others)
- 9. Clearmake Hydraulic Diversion Valve 100mm
- 10. 100mm Tradewaste Outlet (by others)
- 11. Bunded Washdown Area (by others)
- 12. Pressure Cleaner

- 13. Demand Valve
- 14. RPZ Valve (by others)
- 15. Dedicated Washdown Line (by others)
- 16. 40mm electrical conduit (by others) containing the 1/2" nylon driveline to the Valve Actuator
- 17. Diversion Pit with Class B Grate and Silt Tray
- 18. Valve Pit with Sealed Checker Plate Lid
- 19. Discharge to Sewer
- 20. 100mm Stormwater outlet (by others)
- 21. Clearmake M2 Low Voltage Controller with high Level Alarm
- 22. Separator Pump



Project

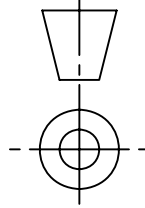
Name **Section of Typical Unroofed Washdown/Treatment System**

Drawing No. **051017PM2-04**

Revision	Drawn	Checked	Date
4	M.W	D.G	26.03.09



CLEARMAKE PTY LTD ABN 62 125 030 364 21 PROJECT AVE NOOSAVILLE QLD 4556 AUSTRALIA
 PH: 61 7 5455 6822 FAX: 61 7 5455 6833 EMAIL: info@clearmake.com.au WEB: www.clearmake.com.au



Dimensions in millimetres

Not to Scale

General Tolerances ISO 2768-m u.n.o.