

# PRODUCT DATA SHEET

## Bow Screen Static or Wedge Wire

water | wastewater | treatment | recycling



### OVERVIEW

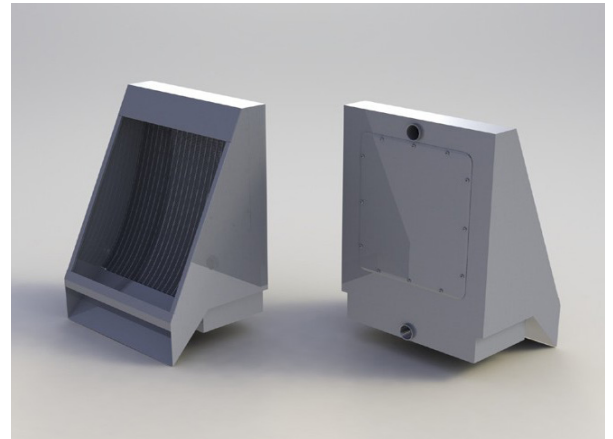
Many water treatment and sewer discharge applications experience problems with larger suspended solids causing blockages or fouling. These situations often result in overflow unpleasant odours and additional maintenance on down stream equipment.

The Clearmake Bow Screen is a cost effective solution to remove larger suspended solids prior to further treatment. As a mechanical screen with no moving parts it is particularly effective for applications which require:

- High capacity with fluctuating flow rates
- Minimal control and operation
- Low investment and operating costs

Applications where a bow screen is normally used include:

- Golf clubs (grass clipping removal)
- Sports ground maintenance operations (grass clipping removal)
- Vehicle wash down (coarse solids removal)
- Train wash down (coarse solids removal)
- Waste processing facility (coarse solids removal)



### STANDARD SPECIFICATIONS

- The screen is made from 304 stainless steel.
- A Clearmake Bow Screen is most often attached to the front of a Clearmake Oil/Water/Solids Separator. Waste water is drawn from the collection pit and passed over the Bow Screen, where the suspended solids are screened off for later removal. The water then passes through the separator for treatment.
- A portable solids basket is also available to collect solids removed from the waste water stream by the Bow Screen.

## MODEL SELECTION

Part Number	Description	Size mm (HxWxD)
AS-BWSC	Bow Screen with galvanised metal stand, 3000 LPH	1850x560x390
CM-BWSC-NS	Bow Screen with No Stand, 3000 LPH	750x560x390
CM-BWSC-STA	Bow Screen Stand Only	1100x560x390
CM-PSB	Portable Solids Basket	945x640x640
CM-PSB-TRO	Portable Solids Basket – Trolley Only	945x640x640
CM-PSB-BAG	Portable Solids Basket – Replacement Bag	700x490x570

“We recently chose to partner with Clearmake to design and manufacture a solution for us, as we get a lot of grass entering the system after we wash down our course machinery and equipment. The Bow Screen developed by Clearmake screens off the grass clippings from the wash-bay water and significantly reduces the volume that passes through the separator. This ensures that the waste water is able to be treated to a level suitable for discharge”.

“We selected Clearmake because we have used their equipment before and because they were keen to work with the Golf Course Industry to come up with a solution for this problem. We are very pleased with the performance of the Bow Screen and I would recommend Clearmake to other industry facilities looking for a similar solution”.

Course Superintendent, Pennant Hills Golf Club



**Disclaimer:** MAK Water is continuously updating and improving its products and services, so please contact us for more detailed information or to confirm specifications. MAK Water takes no responsibility for any errors resulting from the use of information contained within this document.

STD-PDS-011 | SEP-2018