

CASE STUDY

PROJECT POTABLE WATER DISINFECTION FOR TEMPORARY CONSTRUCTION SITE
PRODUCT Sodium Hypochlorite Disinfection - Recirculated (SHDR)
INDUSTRY Oil & Gas
LOCATION Pilbara Region, Western Australia



BACKGROUND

A contractor for a major Oil & Gas plant expansion project in the northwest of Western Australia had two 260kL water tanks supplying potable water to the construction facilities. MAK Water was selected to design and manufacture a reliable solution to maintain adequate disinfection levels in the tanks and pump the water through the distribution network.

MAK Water worked closely with the client to design a fit for purpose, custom Sodium Hypochlorite Dosing - Recirculated (SHDR) plant to continuously maintain a specified chlorine level in the water so that it safely complies with the Australian Drinking Water Guidelines (ADWG). The system is also flexible; able to operate on one tank while the other one is being refurbished.

SOLUTION

Containerised Sodium Hypochlorite Disinfection - Recirculated (SHDR) with pump skid to disinfect and distribute up to 520 m³/day of potable water.

MAK WATER KEY SOLUTIONS

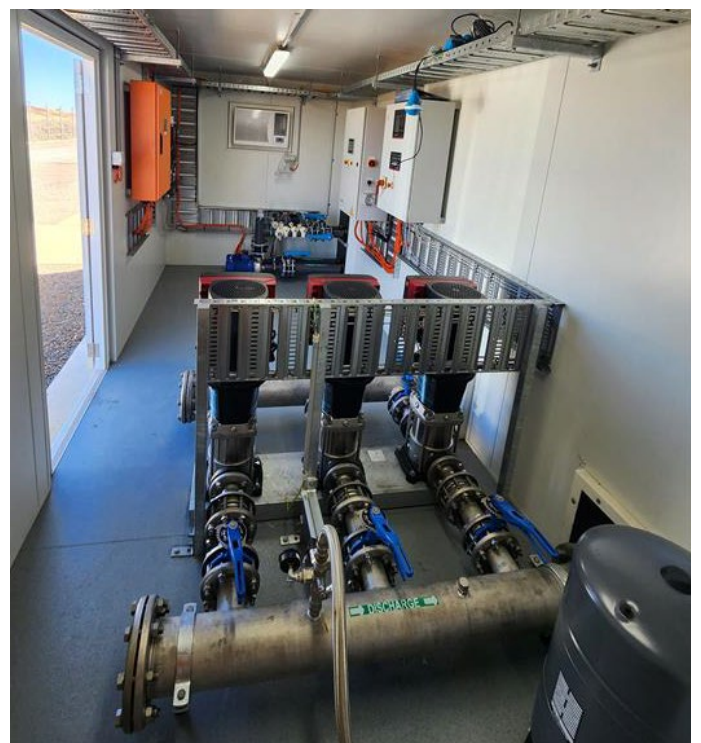
- Custom designed system to operate at 50% capacity or full capacity 2 x 50%.
- One dosing pump and chlorine analyser per tank.
- Continuous online monitoring of free chlorine with automated chemical dosing.
- Potable tank recirculation pumps.
- Containerised (1 x 20') solution for easy transport, installation and maintenance.
- Insulated container with air conditioning to minimise stored chlorine heat degradation and reduce power consumption.
- Onsite plant commissioning and operator training.
- Ongoing service and maintenance contract.

RESULTS AND BENEFITS

- **Compliance.** Achieves required potable water compliance with ADWG.
- **Technical Support.** Expert advice and weekly ongoing plant service and maintenance by MAK Water to guarantee minimal operation from the client.
- **Plant Reliability.** Custom designed for its operating environment with duty/standby setup to provide reliable operation.



MAK Water containerised SHDR plant installed on site



Internal view of the containerised SHDR plant